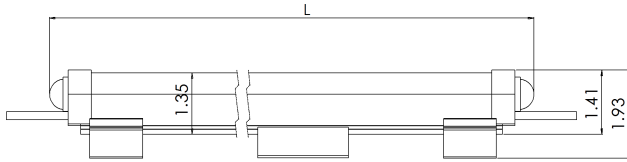
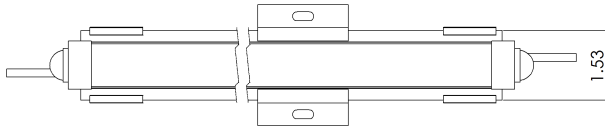


SkyLine Rigid Border Tubing

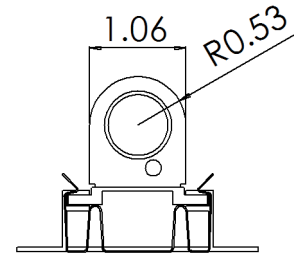
SIDE VIEW



TOP VIEW



END VIEW

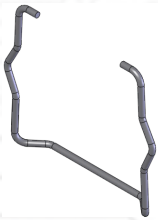


Installation hardware included but not attached.

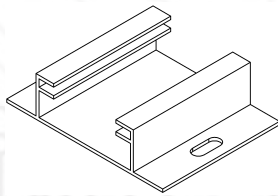
- Operating Temp: -40° C to 70° C
- Protection Class: IP67
- Power Capability: Max combined footage 37' per Allanson 96W 24 VDC Power Supply (CV244-120-277)
- Standard Colors: **Red (RD), Yellow (YL), Lemon Yellow (MY), Orange (OR), Cool White (CW), Blue (BL), and Green (GR).** [Custom colors upon request - minimum order quantity required]
- Power Consumption: 2.4Watt/Ft for standard colors and 7Watt/Ft for RGB color changing option.
- Installation Hardware: Stainless Steel Snap Clip, Aluminum Slide Clip, Wire Retainer Clip, Wire Nuts

Installation Hardware Kit (54-012B)

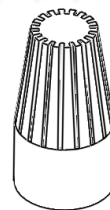
Additional installation hardware as required.



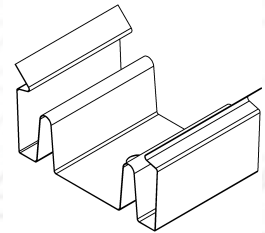
(Wire Retainer Clip x 1)



(Aluminum Slide Clip x 3)



(Wire Nut x 4)



(Stainless Steel Clip x 2)

Part number	Total Length (inch) (Outside Diameter)	Imperial Fraction	Watt	Amps
ARBT-98XX	98.20	98 ³ / ₁₆	19.04	0.79

- XX in part number denotes color (RD, YL, MY, OR, CW, BL and GR)
- For custom cut lengths or specific project requirements please contact your local Allanson Representative

For all your population services contact us at led@allanson.com

